

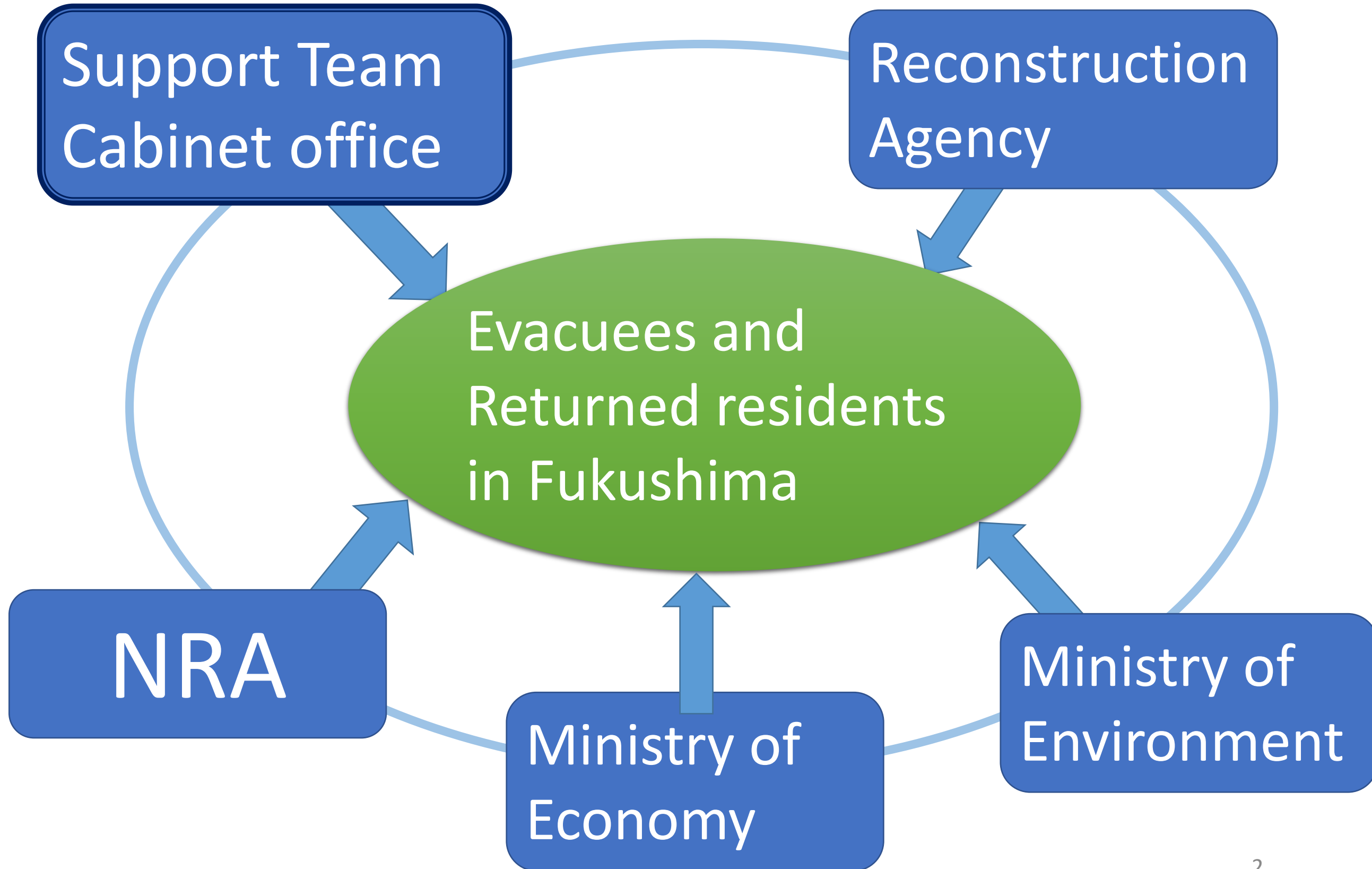
# **Current Status and Challenges on the Evacuation Areas in Fukushima**

Yasunori NOGUCHI

Director,

Support Team for Residents Affected by Nuclear Incidents,  
Nuclear Emergency Response Headquarters, Cabinet  
Office

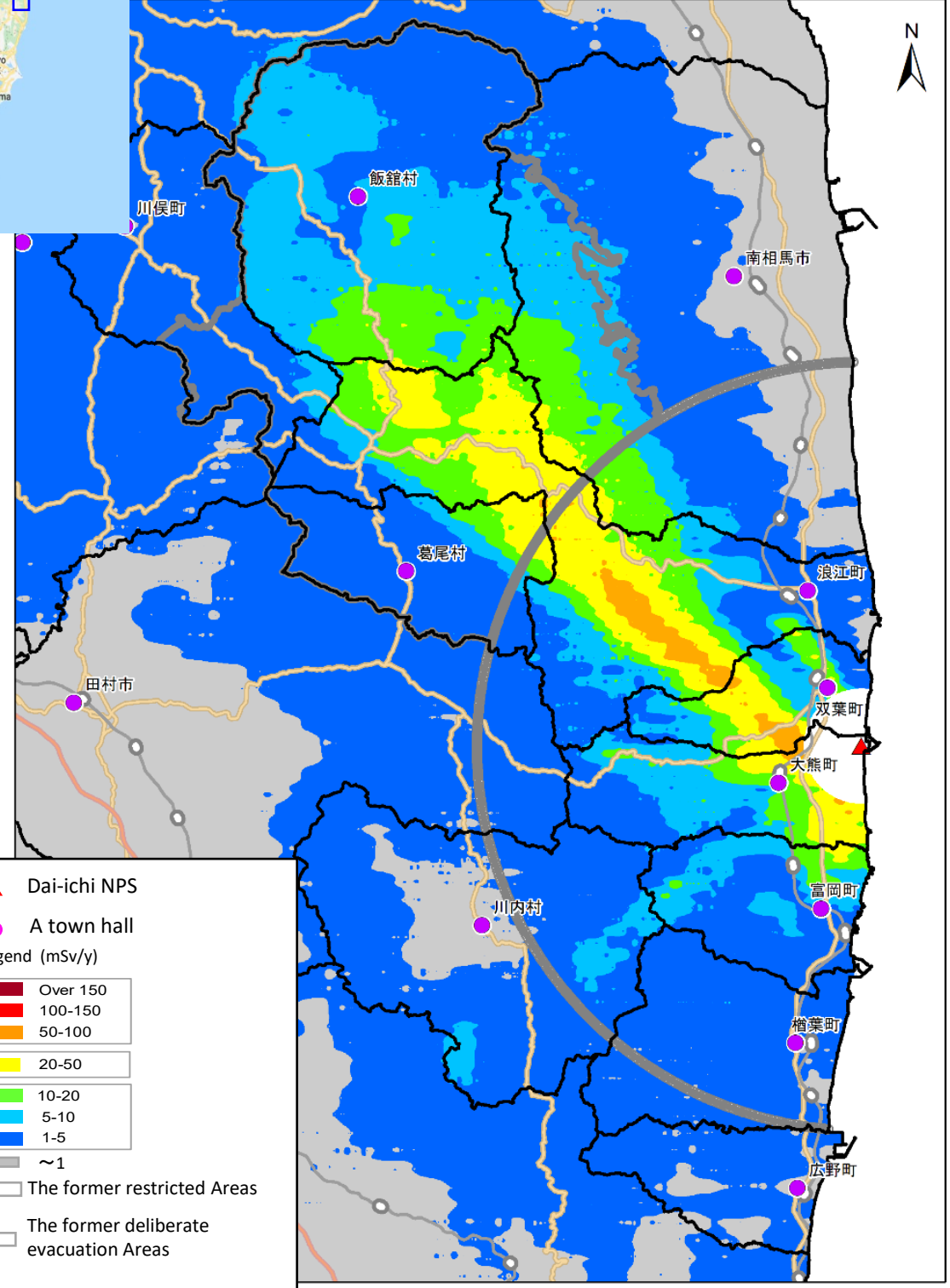
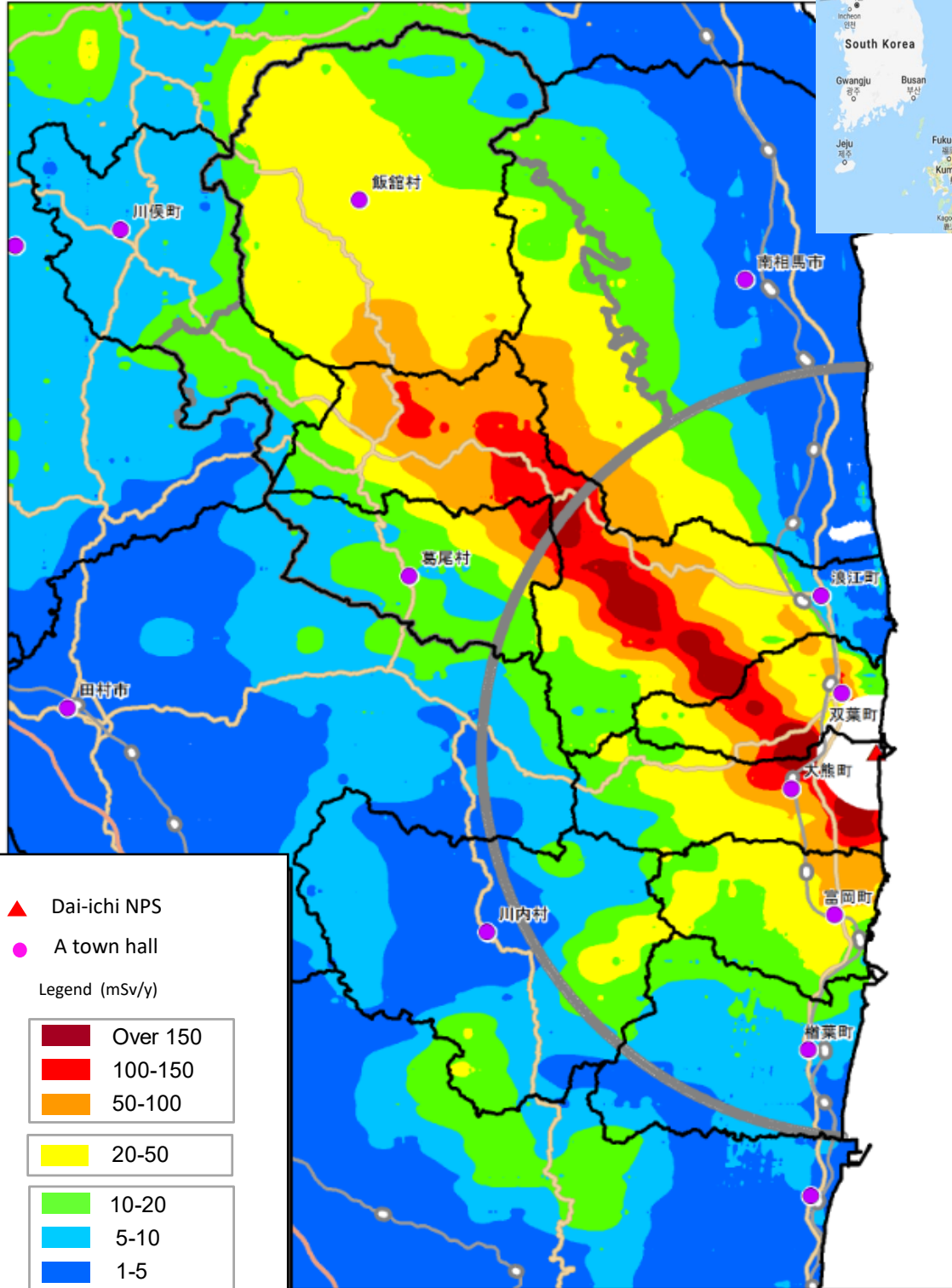
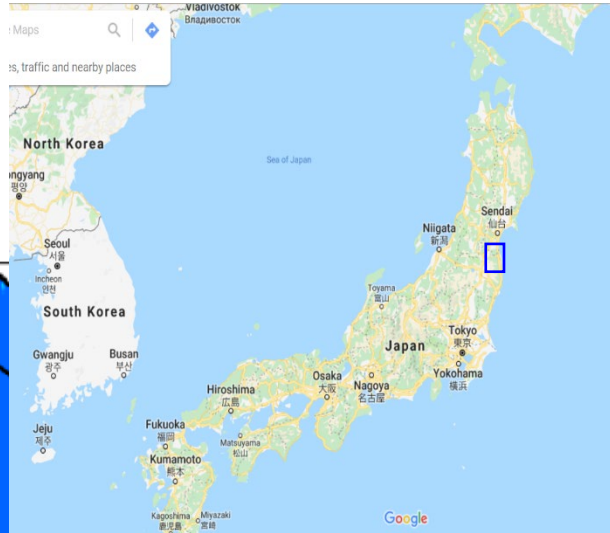
Oct 25, 2019



# Reduction in Annual Cumulative Dose of Radiation

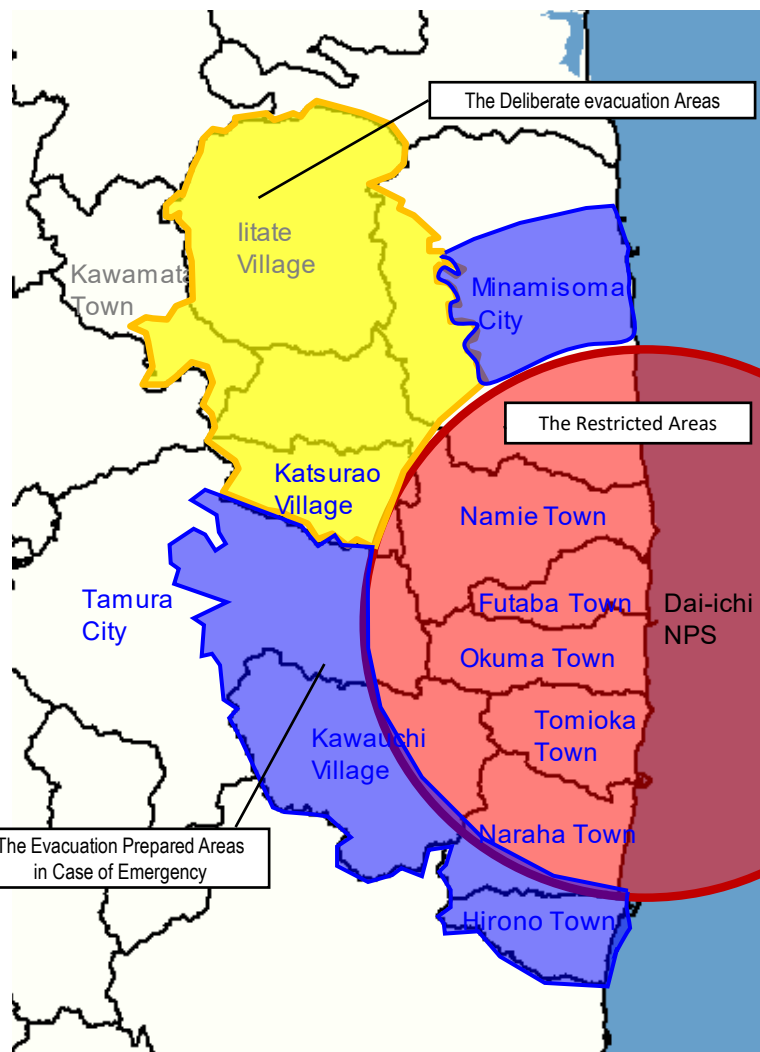
November, 2011

November, 2017

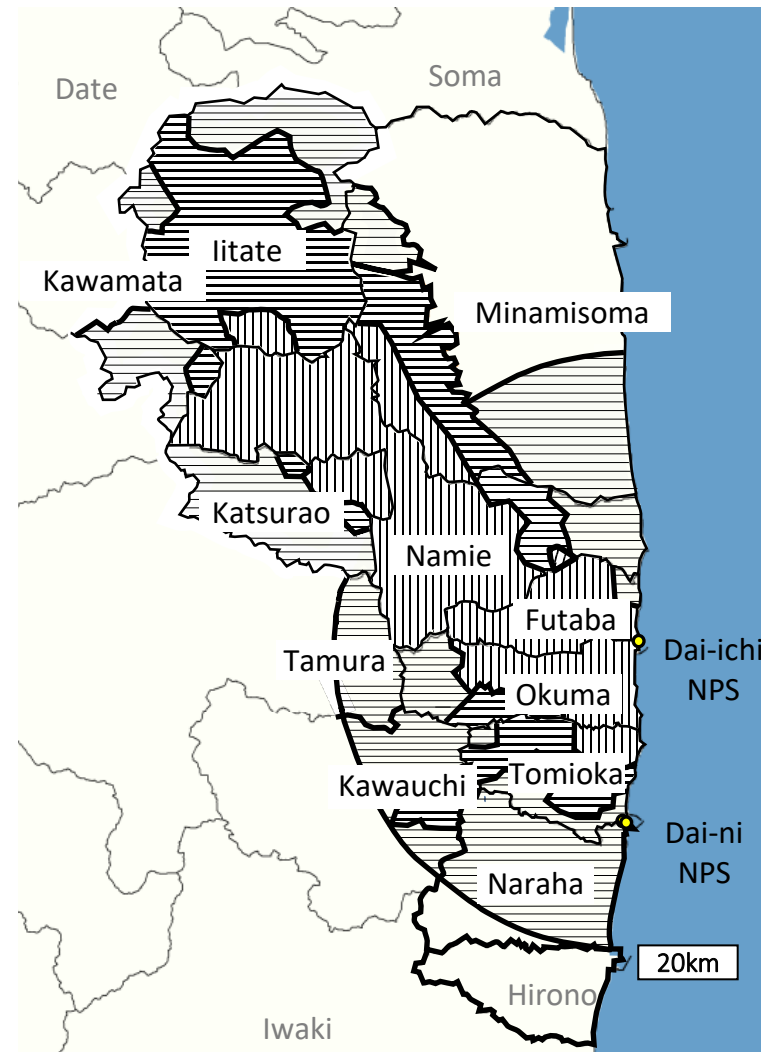


# Overview of Evacuation Areas

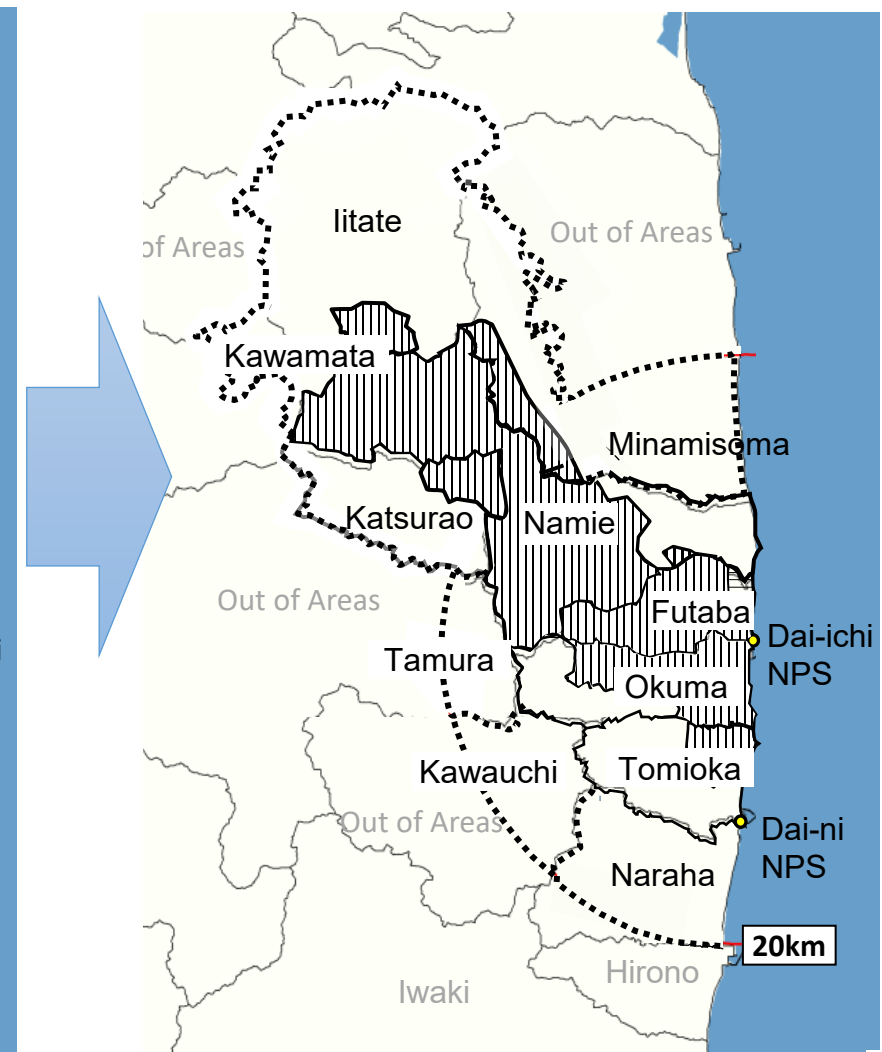
April 2011



August 2013



April 2019



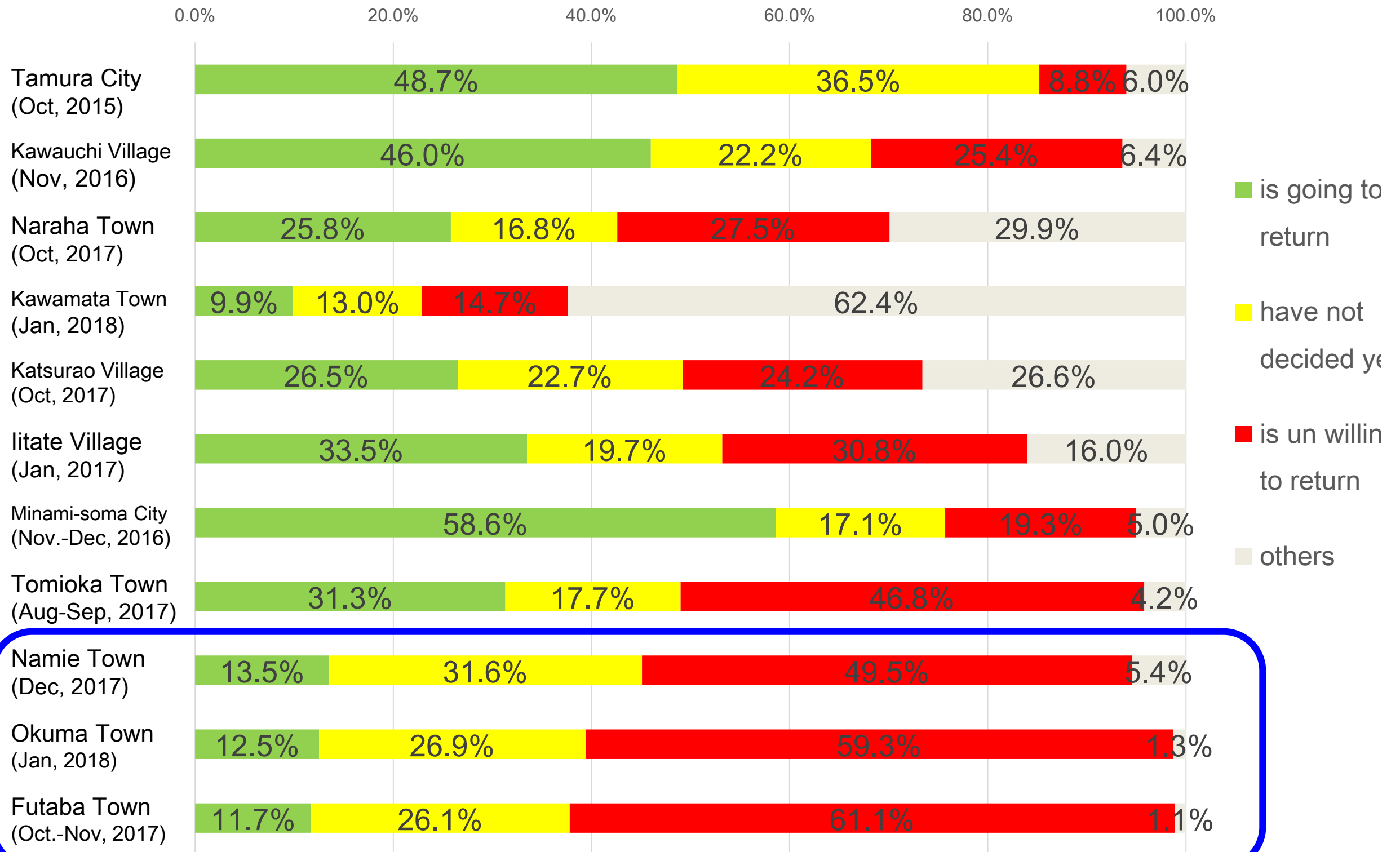
- ①  $< 20 \text{ mSv/y}$  (Long Term  $1 \text{ mSv}$ )
- ② Infrastructure for living
- ③ Dialogue

$$20\text{mSv/y} \doteq 3.8\mu\text{Sv/h}$$

$$1\text{mSv/y} \doteq 0.23\mu\text{Sv/h}$$

# The survey on the residents' will to return

✓ The survey on the residents' will to return was conducted by Reconstruction Agency, Fukushima Prefecture and each municipalities.



\*The inside of bracket indicates times of survey.

【 Medical facility 】



【 School 】



【 Shopping facility 】





## Decommissioning

Mock-up test facility



## Robot

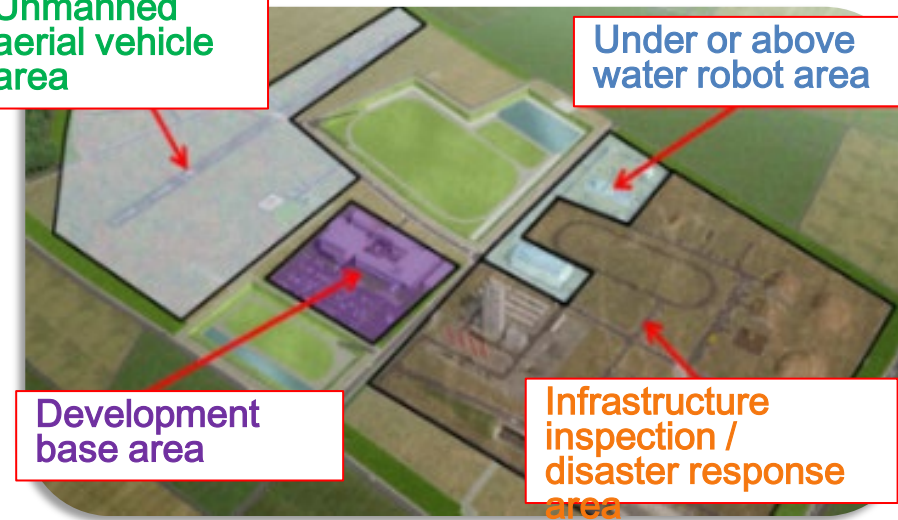
Fukushima robot test field

Unmanned aerial vehicle area

Under or above water robot area

Development base area

Infrastructure inspection / disaster response area



## Energy

Large-scale hydrogen production & Demonstration base



Smart city

## Agriculture

Improvement of productivity



Tomatoes at "Wonder Farm"

# “COUNSELORS” for Fukushima evacuees to return home

## Roles of COUNSELORS (Examples) :

- How to use measure radiation dose and explain the meaning of results

## Support of national government

- “Support Center for COUNSELORS.”



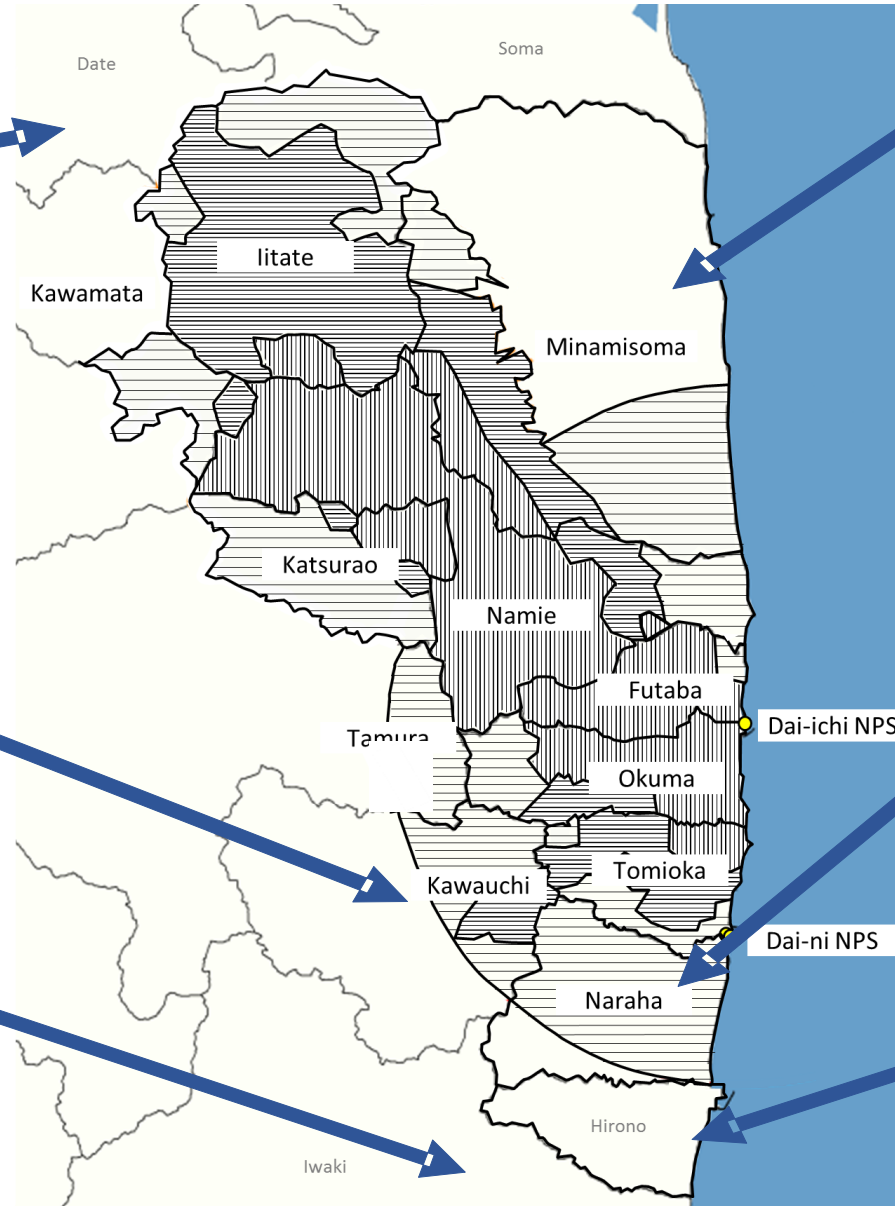
Date City



Kawauchi Village



Suetsugi , Iwaki City



Minamisoma City

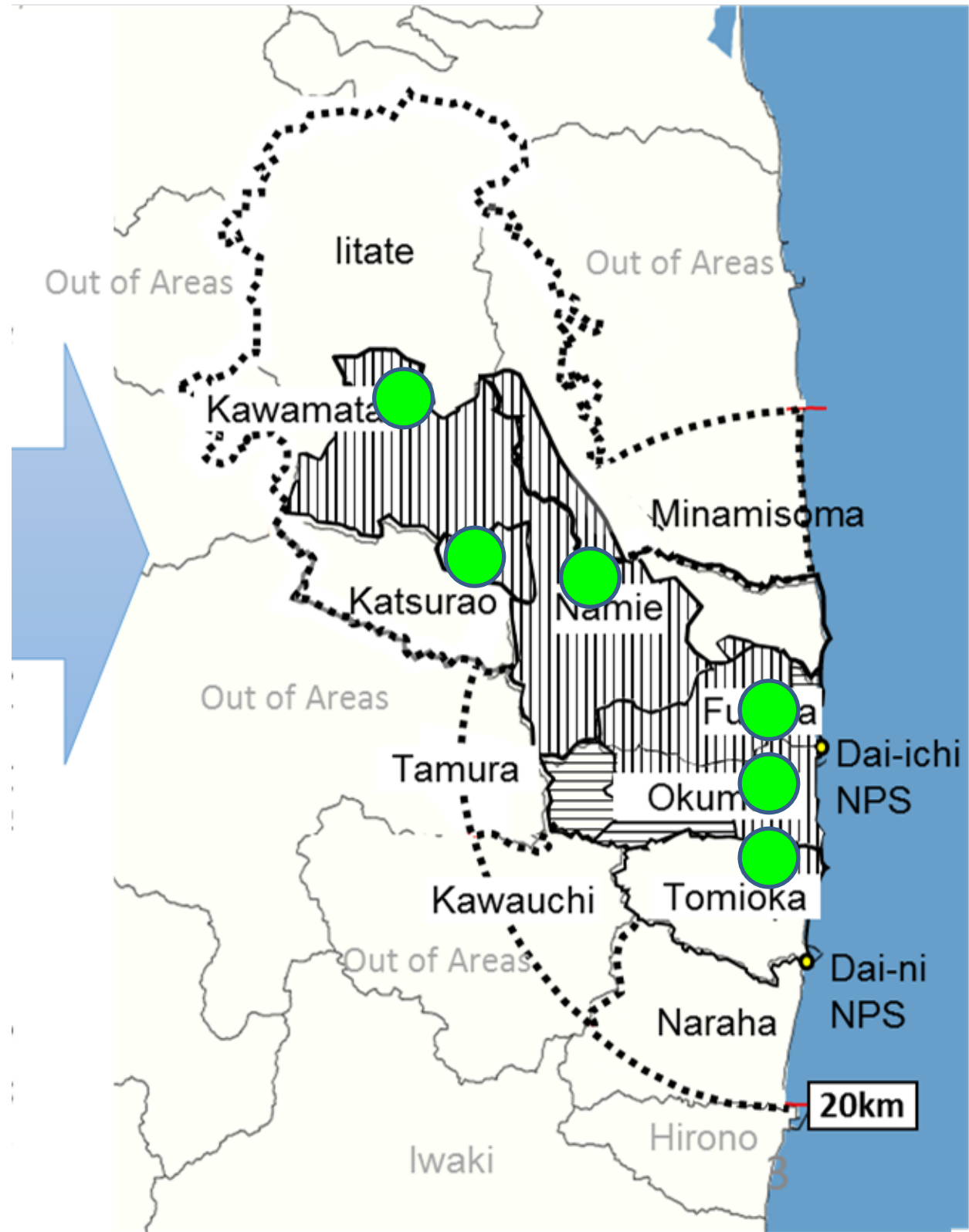


Naraha Town

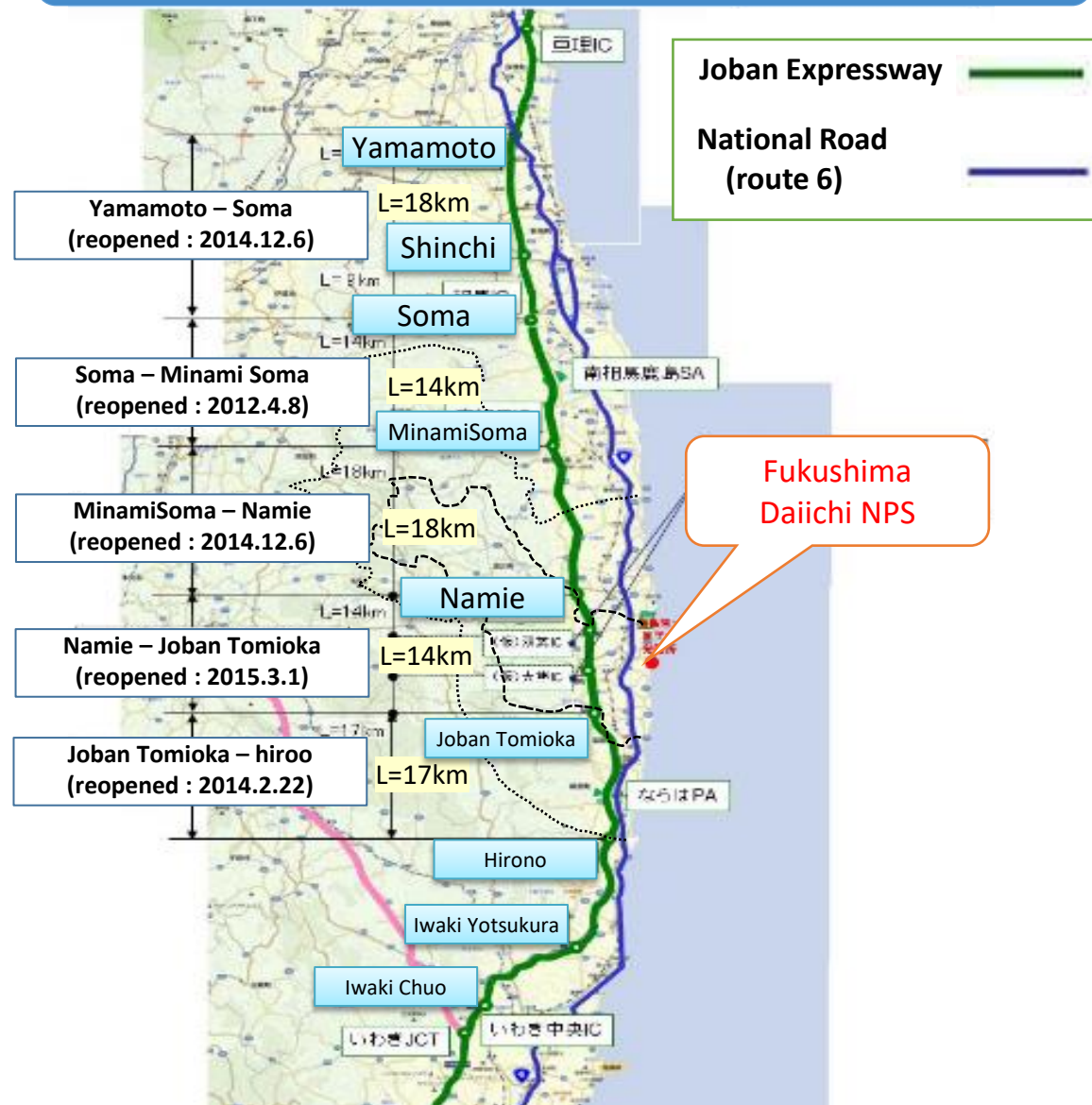


Hirono Town 10

# Development of The Specified Reconstruction and Revitalization Base



## High Way and National Road



## Railway : JR Joban line

